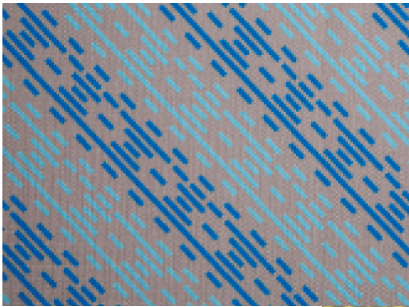
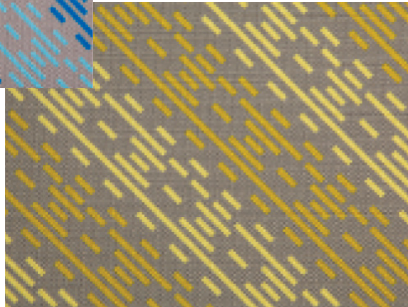


Window Treatment Dawn



Color: 181-KAT
QTY _____



Color: 755-KAT
QTY _____

**Custom Center Draw, Ceiling Mounted,
Traversing Printed Blackout Panels with
Solid Transversing Sheers**

Drapery Includes:

Top Treatment

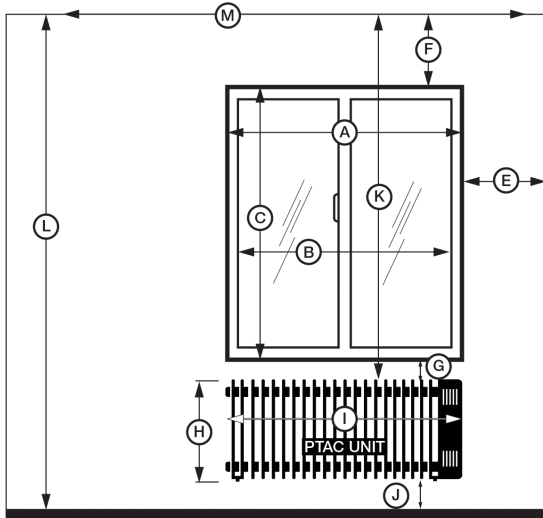
Standard Box Valance
8" H w/5" return VIF

Sheer

Color: Stonewashed D46-53
Style: Pinch Pleat
Panels: Operative
Fullness of Panels: 200%
Dimensions: Extend 6" beyond opening
Finished Length: 1/2" above PTAC VIF

Panels

Style: Pinch Pleat
Fullness: 200%
Dimensions: Extend 6" beyond opening
Finished Length: 1/2" above PTAC VIF



Insert dimensions requested in the blank lines below and submit this page along with the Quote Request Form for the Window Treatments needed.

Contact Name: _____

Shipping Address: _____

City: _____ State: _____

Phone Number: _____

Fax Number: _____

E-mail Address: _____

- A. _____ Width of Window (outside measurement)
- B. _____ Width of Window (inside measurement)
- C. _____ Height of Window (outside measurement)
- D. _____ Width from left of Window to wall
- E. _____ Width from right of Window to wall
- F. _____ Height from top of Window to ceiling
- G. _____ Height from bottom of Window to top of PTAC Unit
- H. _____ Height of PTAC
- I. _____ Width of PTAC
- J. _____ Height from bottom of PTAC to floor
- K. _____ Height from top of PTAC to ceiling
- L. _____ Height from ceiling to floor
- M. _____ Length of existing tracks

Images featured are prototypical and are for representation purposes only; actual colors and styles may vary. All products and services are provided by AVM Enterprises and not Wyndham Hotels & Resorts, Inc. (WH&R) or its subsidiaries. Neither WH&R nor its subsidiaries are responsible for the accuracy or completeness of any statements made in this advertisement, the content of this advertisement (including the text, representations and illustrations) or any material on the AVM Enterprises website to which the advertisement provides a link or a reference. Please refer to the applicable brand specifications for your property prior to purchasing products.